

step 3

Follow these instructions to paint your own doors



paint your own doors

Things you need to know

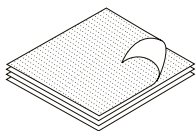
- Please refer to individual product instructions for installation of doors and panels
- These steps are to be used as a guide to help you achieve the best possible paint application, however please refer to the instructions provided by the paint manufacturer for further detail, safety information and paint specific tips.
- Make sure not to drill screws too far into panels, as they can protrude out the other side.
- Make sure you leave plumbing and electrical work to qualified trades people. Never try this yourself.
- Always drill screws from inside the cabinet into your panels.
- Most panels have melamine backing. Make sure the raw side always faces the outside of a cabinet.
- Whenever cutting or drilling panels, always protect the area being cut with masking tape and cut with the good side facing down.
- All holes that aren't already pre-drilled should be drilled prior to screwing using a No 12 countersinking drill bit.
- Make sure you always use safety gear like a mask, ear muffs and glasses when using tools.
- If you have any questions contact us on **1800 666 078** Monday to Friday between 8.00am and 6.00pm AEST or email: info@kaboodlegroup.com.au

Tools you will need

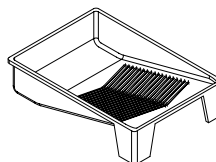
To paint your kaboodle kitchen panels you will need the following tools.



Paint : Undercoat and top coat



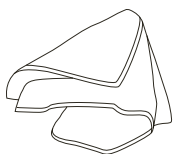
180 grit sandpaper
400 grit sandpaper



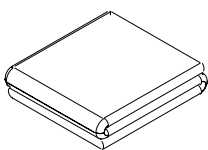
Monarch 230mm deep well paint tray



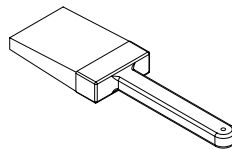
Monarch 4L metal paint pot



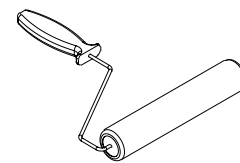
Cleaning rags and equipment



Monarch canvas drop sheets



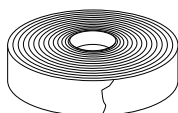
Paintbrush :
We recommend using a Monarch 50mm or 63mm Walls, Doors & Trims Brush; a Monarch 50mm Razorback Nytec Brush or a Monarch Advance 63mm Oval Cutter Brush



Paint roller :
We recommend using a Monarch Doors, Trims and Cupboards Roller



Safety gear



Masking Tape

plan + select + create + enjoy!

Painter's tip: Soak your brush in about 20mm of water when using water based paint, or turps if using oil based paint, for 15 minutes before painting to help lubricate the filament of the brush.

Painter's tip: Wash your roller under running water to remove any loose lint, then shake out all the excess moisture. The best way to get all the moisture out is to put your roller on the roller frame and spin it down a door.

paint your own doors

step 1.

Prepare your board for painting by sanding it down with 400 grit sandpaper to remove any imperfections on the surface of the MDF. Clean the panel using a damp cloth to remove any dust or residue.

Painters tip: Use a vacuum with a small brush attachment to go over mouldings and door faces to remove any excess dust.

step 2.

Make sure your work area is free from dust as much as possible.

Lay a drop sheet down to protect your work area from paint splatters.

step 3.

Mix your undercoat thoroughly and pour some of the undercoat into your paint pot. Load your brush with a small amount of paint, and paint the sides, edges and any mouldings of the door.



step 4.

Pour undercoat into your paint tray and dip your roller into the paint, rolling it back and forth across the grill of the tray, ensuring the paint is spread evenly over the roller.



step 5.

Using your roller, apply the paint to the panel using long, vertical strokes. Once you have applied paint to the entire surface of the panel, lightly re-roll over the panel to create a smooth, even paint film.

Painters tip: To achieve a smooth, even finish, start at the bottom of the panel, lightly rolling the roller all the way to the top and back down to the bottom of the panel. Then, move across a roller width and do the same again. Repeat this right across the face of the panel.

Painters tip: To get that professional finish, you may want to 'tip off' the paint to remove the stipple pattern created by the roller. Using your paintbrush, start at the top corner of the door and lightly glide the tip of the brush down the door about two-thirds of the way. Then come up from the bottom of the door and overlap what you just did. Repeat this right across the door, concentrating on moving across the door a brush-width at a time.

step 6.

Allow the undercoat to dry thoroughly in a dust free environment.

Once dry, use 180 fine grit sandpaper to lightly sand the panel, creating a smooth surface. Wipe away any dust, using a vacuum if necessary.

Painters tip: Ensure you leave the specified drying times in between coats, in accordance with the directions outlined on the paint can by the paint manufacturer.



step 7.

Repeat steps 3 - 6, using top coat. Apply two coats of top coat over your undercoat, to allow for colour accuracy and a good build of paint.

step 8.

Allow the panels to dry and harden thoroughly before attaching hardware or installing.

Handy hints:

- To achieve a satisfactory finish it is important to use the recommended products and to follow the steps outlined.
- Make sure you paint both sides of any panel which is not melamine backed to prevent bowing.
- Paint can chip and scratch easily, so always put down low adhesion masking tape first before drilling any hole through the painted panel. Screw handles on carefully so as not to scratch the paint work.
- Painted surfaces will not be as tough or as durable as laminated surfaces and therefore should always be treated with care.
- For cleaning of your painted panels, always ensure you use a soft cloth and warm soapy water. Never use a scourer which may scratch or damage painted surfaces.
- For more paint tips, visit the Monarch website on www.austbrush.com.au and go to 'How to Videos'

What paint is right for me?

Choosing the best product for your project can be tough, so make sure you are aware of any pros and cons before making a final decision and always seek advice from a painting professional.

Undercoat: We recommend using a sealer primer undercoat

Top coat: We recommend any of the below, so check out our handy table to see what best suits your needs

Water-based or oil-based:

Water-based paint:	Oil-based paint:
Easy clean up with water	Strong smell. Mineral turps required for clean up
Quick to dry - can be recoated in 24 hours	Slow drying - must leave 16 - 24 hours between coats
Provides a tough, durable finish	Provides a harder, tougher and more durable finish
DIY friendly and easy to use	Good levelling for a smooth, glossy finish
Eco-friendly option	Harmful to the environment
Whites are non-yellowing	Whites may yellow or darken with age

Low-sheen, semi-gloss or gloss finish:

Low-sheen:	Semi-gloss:	Gloss:
Soft, satin finish and lustrous appearance	Less reflective than gloss paints	Highly-reflective smooth surface which promotes intense colour
Disguises imperfections well due to the low level of reflection	Suited to high-traffic areas, commonly used on trims and skirtings	Easy to wipe away fingerprints, grease and grime
Easy to clean	More stain resistant than flatter paints	Highlights surface imperfections

Caring for your kaboodle doors and panels

Looking after your cabinets is really easy and with the right care and maintenance they will last you for many years. Just follow these simple steps and if you need any more information you can contact us us:
 Australia: **1800 666 078** Monday to Friday between 8:00am and 6:00pm AEST. New Zealand: **0800 522 663** Monday to Friday between 8:00am and 5:00pm NZST or email: info@kaboodlegroup.com.au.

All doors should be cleaned with warm soapy water or an all purpose, non-abrasive cleaner with a damp cloth and make sure you never use a saturated cloth, harsh chemicals or thinner based cleaners. Try to avoid using sponges on your doors and these can leave residue streaks on the surface. Never use steel wool, scourers, dry cloths or rough products on any doors as this will scratch the surface.

We offer a dedicated customer service line for advice or any questions you may have on kaboodle products.

Call customer service on:
 Australia: **1800 666 078** Monday to Friday between 8.00am and 6.00pm AEST
 New Zealand: **0800 522 663** Monday to Friday between 8.00am and 5.00pm NZST or email: info@kaboodlegroup.com.au

