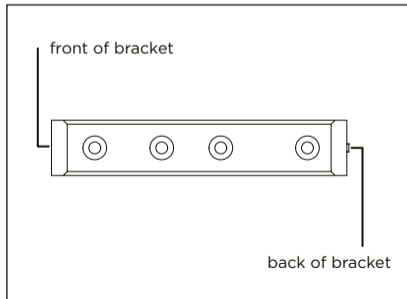




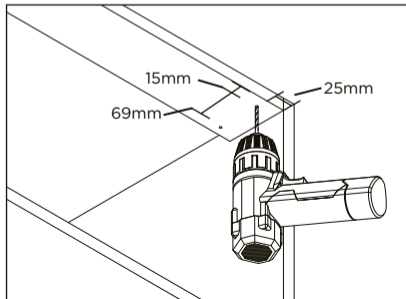
# attaching push to release mechanism

## corner cabinets

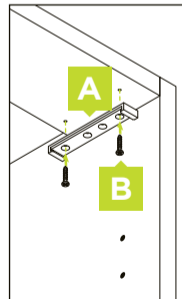
1.



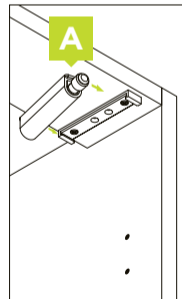
2.



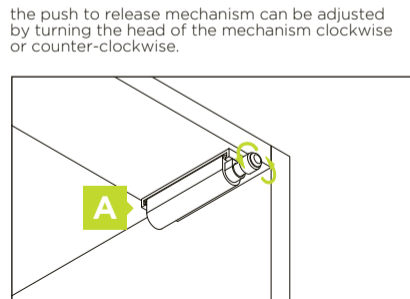
3.



4.



5.



## attaching push to release mechanism

the push to release mechanism can be adjusted by turning the head of the mechanism clockwise or counter-clockwise.

# step 2

hardware key



## Caring for your Kaboodle parts and accessories

Looking after your parts and accessories is really easy and with the right care and maintenance they will last you for many years. Just follow these simple steps.

Hinges, runners and other parts and accessories should be kept dry at all times. To keep the mechanisms performing at their best, regularly wipe them with a dry cloth removing any dust and grime that may build up.

In case of spills, clean immediately with a dry cloth. Do not use harsh abrasives.

If you need any more information you can contact us:

Australia: **1800 666 078** Monday to Friday between 8:00am and 6:00pm AEST.  
New Zealand: **0800 522 663** Monday to Friday between 8:00am and 5:00pm NZST  
or email: [info@kaboodlegroup.com.au](mailto:info@kaboodlegroup.com.au).

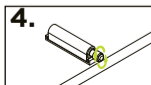
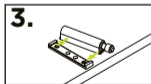
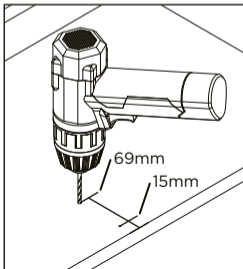
step 1	✓ step 2	✓ step 3	step 4
Your cabinets are now assembled.	You've installed your parts and accessories.	Then follow the instructions to fit your doors and panels.	Finish off your Kaboodle Kitchen by installing your benchtop.

**kaboodle**  
KITCHEN

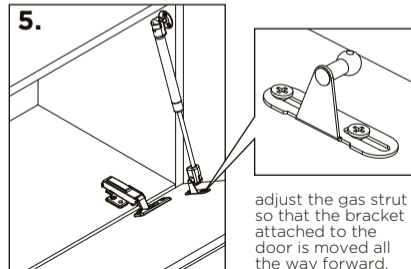
## slimline cabinets

1.

**note:** It is recommended to place the mechanism in the centre of cabinet.



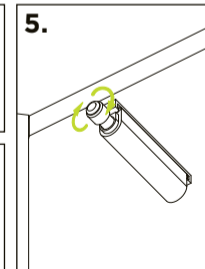
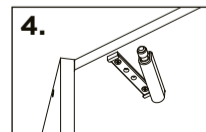
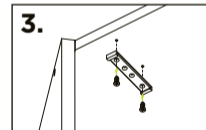
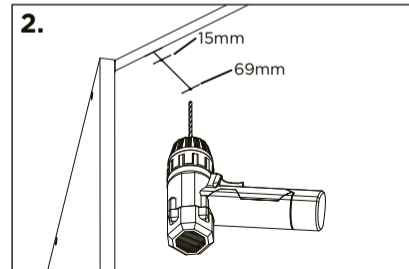
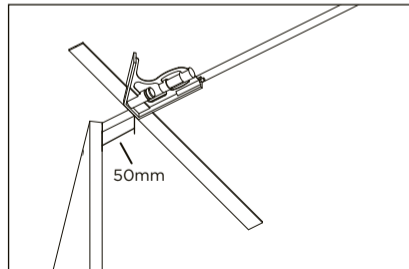
**note:** only install one gas strut on the cabinets when using the push to release mechanism.



## corner pantry

1.

**note:** use a set square to make sure you draw a straight line.



## attaching push to release mechanism